

MONTHLY MEMBERSHIP PROGRESS REPORT

LOCATION INDIANA

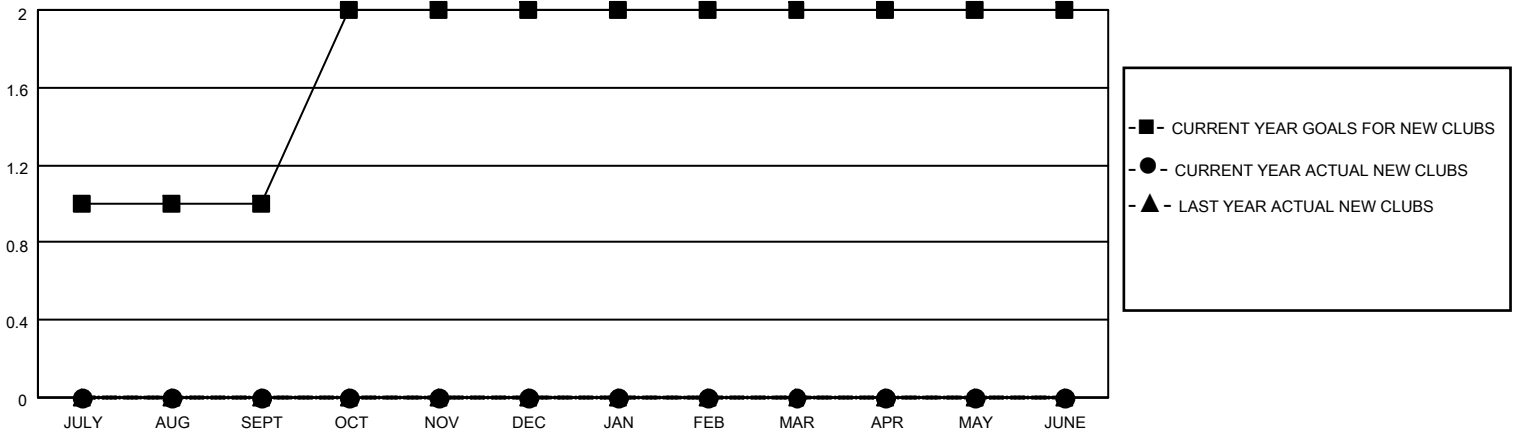
District 25 D

Results as of: 5/31/2023

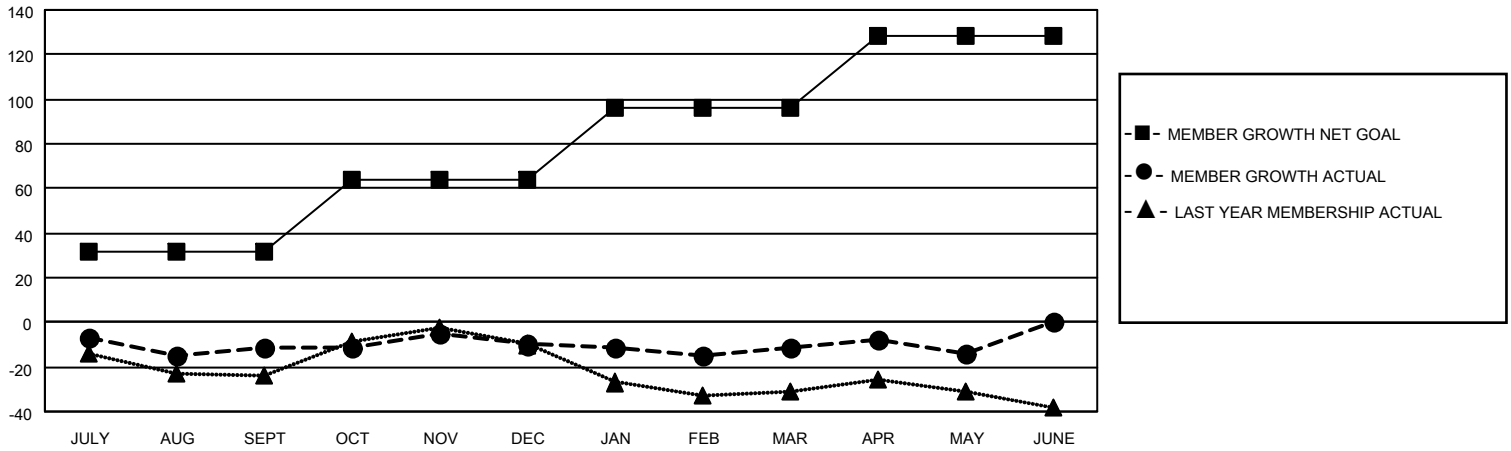
Clubs			
RESULTS FOR 2022-2023			
QUARTER	NEW CLUB GOAL	NEW CLUBS	DROPPED CLUBS
JULY/AUG/SEPT	1	0	1
OCT/NOV/DEC	1	0	1
JAN/FEB/MAR	0	0	0
APR/MAY/JUNE	0	0	0

Members			
RESULTS FOR 2022-2023			
QUARTER	MEMBER GROWTH NET GOAL	MEMBER GROWTH ACTUAL	DROPPED MEMBERS ACTUAL (including transfers)
JULY/AUG/SEPT	32	29	39
OCT/NOV/DEC	32	23	21
JAN/FEB/MAR	32	33	31
APR/MAY/JUNE	32	20	22

GOALS AND ACTUAL NEW CLUBS CUMULATIVE



GOALS AND ACTUAL MEMBERS CUMULATIVE



DROPPED CLUBS: 2

22 CLUBS OF 37 ADDED 1 OR MORE NEW MEMBERS

GENDER DISTRIBUTION

MALE	838 (74.09%)
FEMALE	292 (25.82%)
NON BINARY	0 (0.00%)
PREFER NOT TO ANSWER	1 (0.09%)

DROPPED MEMBERS

[CLICK HERE FOR CUMULATIVE MEMBERSHIP DATA](#)

DECEASED	29
CLUB CANCELLED	4
OTHER	80
TOTAL	113

TOTAL FAMILY UNIT MEMBERS 208

FAMILY MEMBERS PAYING HALF DUES 105